

ALTERATIONS IN BRAIN ENERGY METABOLISM IN THE NEURODEGENERATIVE, CHOLESTEROL-TRAFFICKING DISORDER NIEMANN-PICK TYPE C

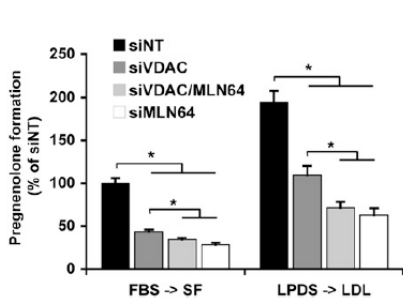
GUEST LECTURE by



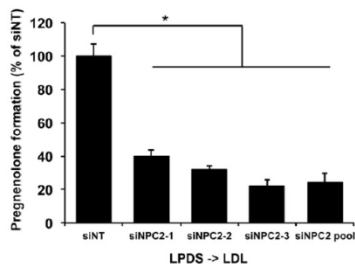
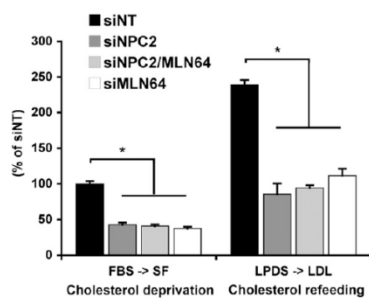
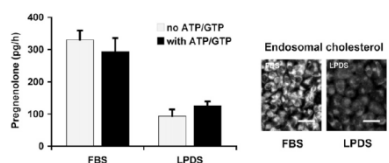
Prof. Barbara Karten, PhD
Department of Biochemistry and Molecular
Biology, Dalhousie University
Halifax, Canada

Friday, 29.11.2013
15:00

SR 07.11, Preclinics
Harrachgasse 21, MUG

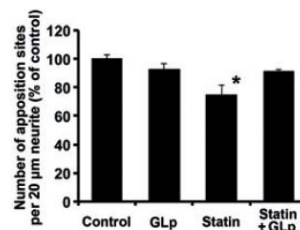
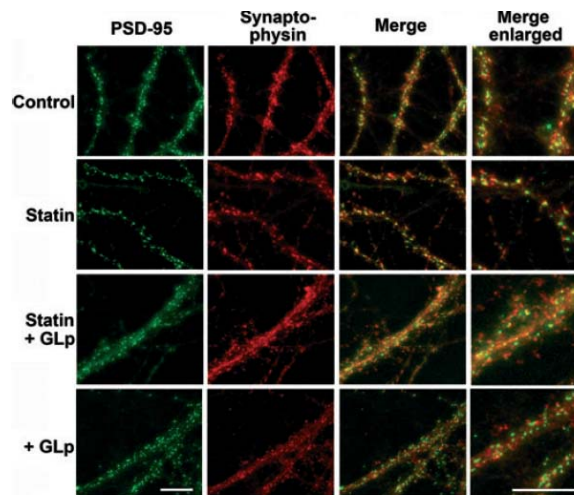


Decreased cholesterol transport to mitochondrial inner membrane cells depleted of VDAC1 and NPC2, respectively.



Cholesterol reaching the mitochondrial inner membrane in semi-permeabilized cells is directly imported from endosomes.

from: Kennedy et al. (2012) J Lipid Res 53:2632-42



GLp counteract the inhibition of synapse formation by lovastatin.

from: Mailman et al. (2011) N Neurochem 119:1002-15

